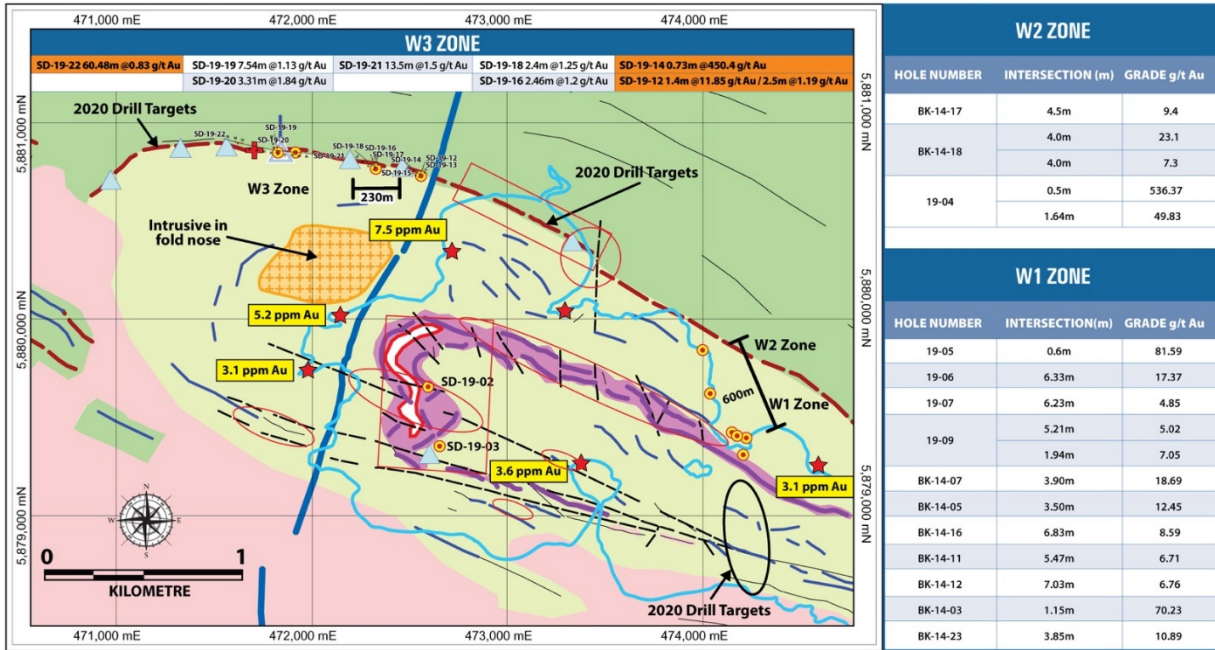


Fig. 2

Sandy Lake, Geology, Geophysics, Drilling W1,2,3 Zones (January 2020)



LEGEND

<p>Drilling</p> <ul style="list-style-type: none"> ★ Grab Samples ● Drill Pads — Drill Fan 	<ul style="list-style-type: none"> △ Current Drilling Area △ VTEM anomalies --- BIF — Basement Structure — Folded Meta-Sediments 	<p>VTEM Anomaly</p> <ul style="list-style-type: none"> — Weak Mag Fabric — Mag Fabric — Ground Mag Survey Line — Meta Volcanics — Meta Sediments 	<ul style="list-style-type: none"> Granite Serpentine / Ultramafic Mag Destruction in Fold Nose Intrusive in fold nose Lake Water
--	---	--	--

Historical grab sample outcrops have been relocated and resampled. Assays are pending.